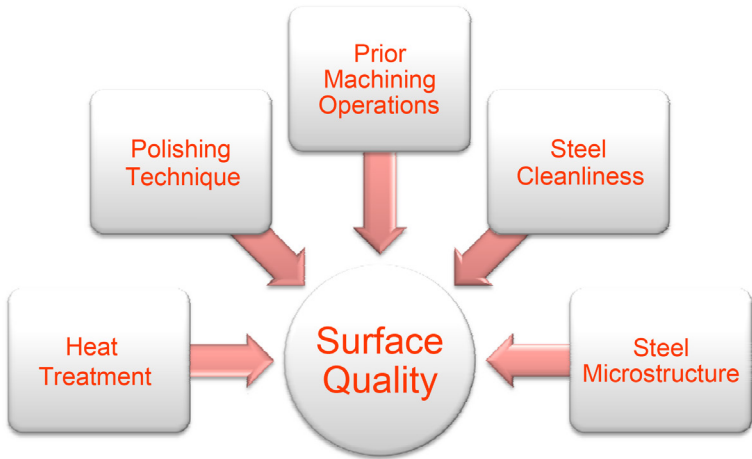


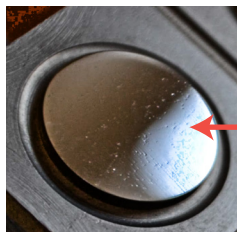
## Cleanliness & Polishability

Steel cleanliness has a major effect on polishability and surface quality. For maximum luster, Marshalloy MQ<sup>®</sup> can be polished like SRI A2.



## Too Many Sulfides = Too Many Pits

When a grade contains too many sulfides, poor cleanliness results and leads to pitting on polished surfaces. High-sulfur grades like P20+S, PX5 and NAK55 are examples of this phenomenon.



*Too many sulfides (MnS) on a surface undergoing SPI A2 polishing can lead to the pitting shown here.*

	Chemistry (mass weight %)			
Grade	C	S	Mn	Cr
P20+S	0.37	<b>0.077</b>	1.61	1.78

## Cleanliness & Polishability

Marshallloy MQ<sup>®</sup> offers a microcleanliness (similar to ESR) ensuring excellent polishability and improved machinability warranted to an A2 finish.

